

**DETTAGLI**

- 2 tasche
- Abbottonatura nascosta con automatici

**TAGLIE**

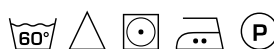
- XS ÷ XXL
- Slim Fit

**COLORE**

- 00 Bianco
- 000 Nero

**TESSUTO**

- 65% poliestere
- 35% cotone
- 140 g / m<sup>2</sup>



Le misure indicate si riferiscono alle taglie **S** per i capi femminili, **L** per i capi maschili. Per i capi a taglia unica le misure indicate sono effettive.

Casacca estremamente femminile, con collo mezzo coreano arrotondato e profilo a contrasto, caratterizzata dalle due tasche nascoste a sacco. L'abbottonatura nascosta ed asimmetrica le dona un look professionale e trendy al tempo stesso.

**COLORI DISPONIBILI**



00 Bianco



000 Nero

TABELLE TAGLIE  
E CORRISPONDENZE

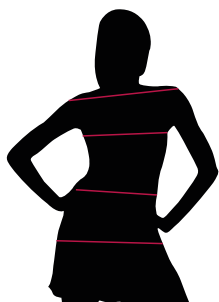
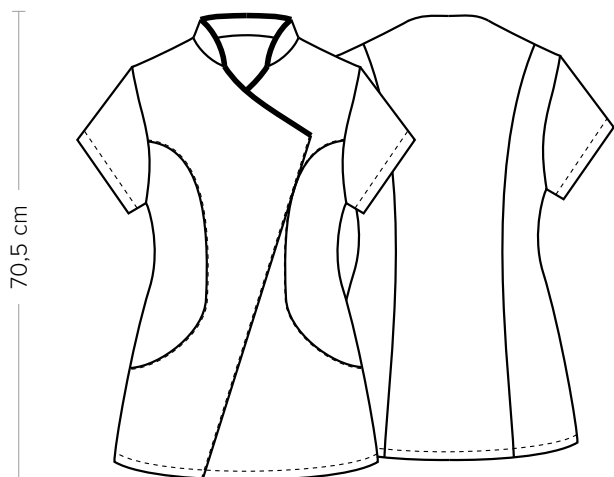


TABELLA ST-K1 SLIM FIT		XS	S	M	L	XL	XXL	XXXL	4XL	5XL
1	TAGLIA									
2	1 - SPALLE									
3	2 - CIRCONFERENZA TORACE	82-86	87-90	91-94	95-100	101-106	107-114	115-122	123-132	135-142
4	3 - CIRCONFERENZA VITA	71-75	76-79	80-83	84-90	91-97	98-106	107-116	117-126	127-136
	4 - CIRCONFERENZA BACINO	92-96	97-100	101-104	105-110	111-116	117-124	125-132	133-142	143-152

**GUIDA ALLE TAGLIE** **1)** Prendere le misure anatomiche (corpo con abbigliamento intimo) senza stringere mantenendo ben teso il metro. **Nota:** nel caso vogliate indossare dei camici già con dell'abbigliamento sotto prendete le misure già abbigliati. **2)** Nel caso tra le misure prese vi fosse una misura a cavallo fra 2 taglie vi consigliamo di prendere quella più grande. **3)** Le misure della tabella sono espresse in centimetri.



### DETAILS

- 2 pockets
- Concealed buttoning with press studs

### SIZES

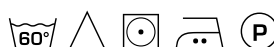
XS ÷ XXL  
Slim Fit

### COLOURS

00 White  
000 Black

### FABRIC

65% polyester  
35% cotton  
140 g / m<sup>2</sup>



The measures indicated refer to sizes **S** for women, **L** for men. For one-size-fits-all garments, the measurements indicated are effective.

Extremely feminine tunic, with round half mandarin collar and contrast piping, characterised by two hidden pockets. The concealed asymmetric buttoning gives it a professional and trendy look at the same time.

### AVAILABLE COLOURS



00 White



000 Black

SIZE TABLES  
AND CORRESPONDENCES

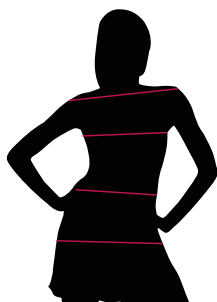


TABLE ST-K1 SLIM FIT		XS	S	M	L	XL	XXL	XXXL	4XL	5XL
1	<b>1 - SHOULDERS</b>									
2	<b>2 - CHEST CIRCUMFERENCE</b>	82-86	87-90	91-94	95-100	101-106	107-114	115-122	123-132	135-142
3	<b>3 - WAIST CIRCUMFERENCE</b>	71-75	76-79	80-83	84-90	91-97	98-106	107-116	117-126	127-136
4	<b>4 - HIPS CIRCUMFERENCE</b>	92-96	97-100	101-104	105-110	111-116	117-124	125-132	133-142	143-152

**SIZE GUIDE** **1)** Take the anatomical measurements (body with underwear) without tightening, keeping the measuring tape taut. Note: in case you want to wear of the gowns already with the clothing underneath take the measurements already dressed. **2)** If there is a measure between 2 sizes between the measurements taken, we advise you to take the bigger one. **3)** The measurements in the table are expressed in centimeters.